

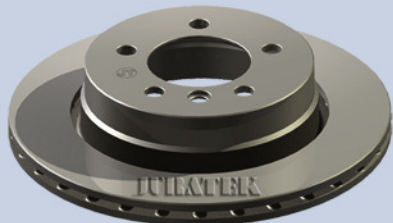
# JURATEK® New to Range

## March 2009

### BMW103

#### NEW PASSENGER CAR RANGE

Application: BMW E36, E46  
various models



OEM: 34211162315, 34211165211

### NIS115

#### NEW PASSENGER CAR RANGE

Application: NISSAN Micra 03- (F)



OEM: 40206AX600, 40206AX602,  
40206AX603, 7701207795

### NIS116

#### NEW PASSENGER CAR RANGE

Application: NISSAN Primera  
98-02 (F)



OEM: 402062F500, 402062F501

### VAG124

#### NEW PASSENGER CAR RANGE

Application: AUDI A4

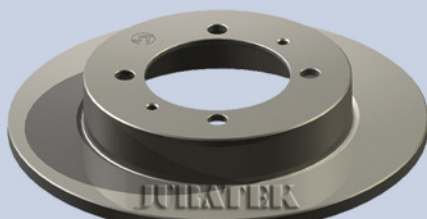


OEM: 8E0615301B8

### VOL121

#### NEW PASSENGER CAR RANGE

Application: VOLVO S40, V40

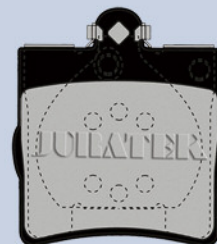


OEM: 30872940

### JCP1311

#### NEW PASSENGER CAR RANGE

Application: MERCEDES (R)



APEC: PAD1063 DELPHI: LP1403  
MINTEX: MDB1926 QH: BP1084

### JCP1428

#### NEW PASSENGER CAR RANGE

Application: MERCEDES C Class (F)

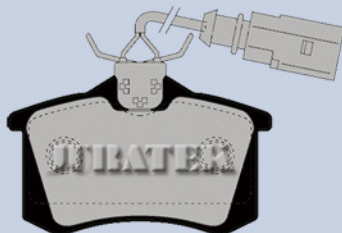


APEC: PAD1166 DELPHI: LP1696  
MINTEX: MDB2070 QH: BP1269

### JCP1481

#### NEW PASSENGER CAR RANGE

Application: FORD Galaxy,  
SEAT Alhambra (R)



APEC: PAD1157 DELPHI: LP1556  
MINTEX: MDB2147 QH: BP1280

### JCP1499

#### NEW PASSENGER CAR RANGE

Application: MINI One, Cooper,  
Copper S -06 (F)



APEC: PAD1257 DELPHI: LP1657  
MINTEX: MDB2162, QH: BP1291

For more information on Juratek's **NEW** Passenger Car Range please visit [www.juratek.com](http://www.juratek.com)

[www.juratek.com](http://www.juratek.com)

