

Research & Development



At Juratek, we pride ourselves on the first class quality of our products. We are in full control of the development and quality processes.

Our Research & Development process includes the following steps:

1. OEM sample measured on CMM Machine

2. OEM sample chemically analysed

Independantly test OE sample for Metalurgical composition and Mechanical anlaysis (tensile strength).

JURATEK STANDARD MATERIAL										
Chemical Analysis										
Element	Carbon	Silicon	Manganese	Phosphorus	Sulphur	Chromium	Molybdenum	Nickel	Copper	Tin
	C	Si	Mn	P	S	Cr	Mo	Ni	Cu	Sn
Juratek Specification	3.20%	1.90%	0.60%	0.15%	0.15%	0.05%	0.01%	0.005%	0.050%	-
	3.50%	2.30%	0.90%	MAX	MAX	0.12%	0.015%	0.030%	0.150%	-
Micro Structure										
Pearlite	95% Min				Ferrite	5% MAX				
Graphite										
Type A size 3-5	85% Min				Type B, C, D & E	15% MAX				
Mechanical Properties										
Tensile Strength	210N/mm ²				Hardness	187 - 241				
Quality										
The castings shall be free from cracks, fins, blows, shrinkage or gas porosity, inclusions, chilled areas, burnt in sand and any other casting defects of any nature. Castings ventilation wells must be equal distance throughout. Thickness of ventilation well must be the same with tolerance of ± 0.7mm. Casting shall not be repaired by welding, plugging or any other method.										
		Juratek is a QSM ISO 9001 : 2000 registered company								

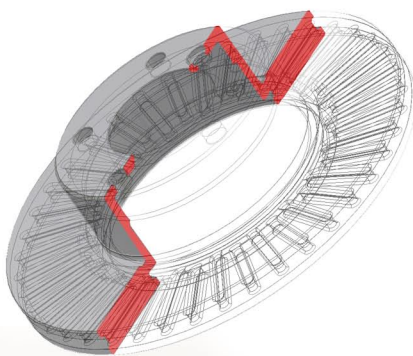
Co-ordinate Measuring Machine (CMM)



Keighley
Laboratories
Limited

3. Measurements entered onto CAD software to create 3D model

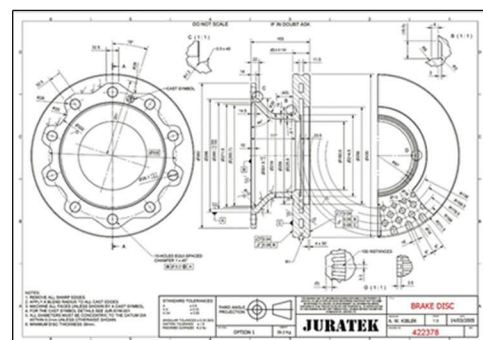
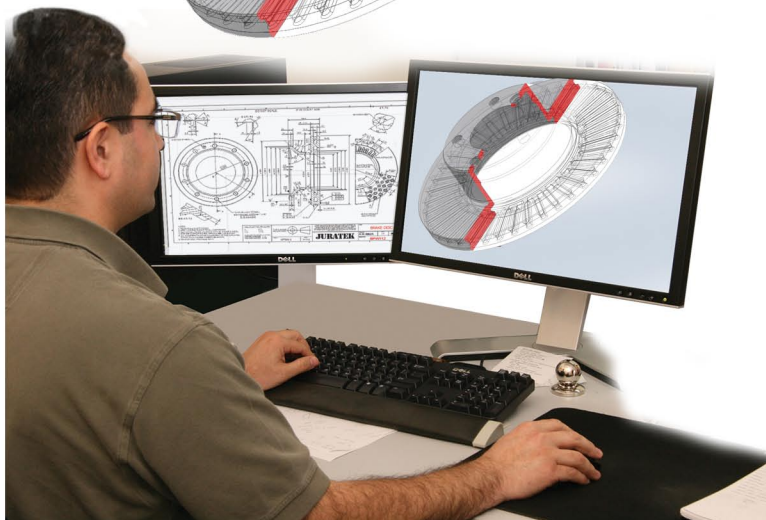
Using the latest Computer aided design software 3D models are produced based on measurements taken from our coordinate measuring machine (CMM).



These models are then converted into 2D manufacturing drawings.

These models are also used in the routine inspection of the products once manufactured, to ensure conformity to the original design.

4. Create a 2D manufacturing drawing from the 3D model



www.juratek.com

