

Brake Disc Replacement Guide

IMPORTANT: Brake discs must be fitted and used in accordance with the vehicle manufacturer's instructions.

Brake discs must be replaced when the minimum thickness of the disc has worn below the dimension indicated by 'MIN TH' on the edge of the disc.

We recommend that brake discs are replaced in pairs and that new brake pads are fitted at the same time to ensure efficient and balanced braking.

Excessive or high-speed braking should be avoided where possible during the first 400km after fitting, until the brakes are fully bedded in. This helps ensure maximum performance of your replacement parts.

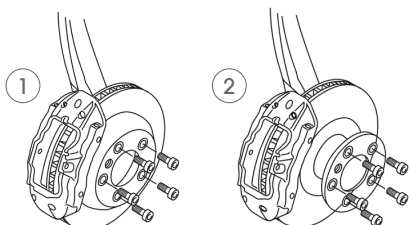
Preparation:

- Chock the wheels and apply the handbrake
- Loosen the wheel bolts / nuts
- Raise the vehicle in a safe and secure manner using appropriate lifting equipment
- Remove the road wheel

1. Remove the brake caliper, paying attention to support it to avoid stress or strain on the brake hose

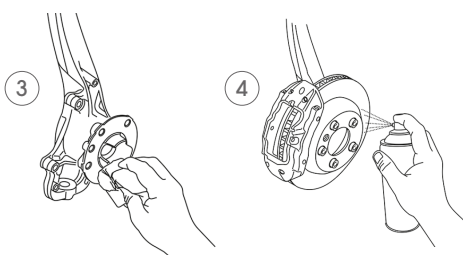
2. Depending on the disc / hub mounting design, remove the disc as follows:

- Internal support type: Remove retaining screws where present and remove the disc from the hub flange (**fig. 1**)
- External support type: Undo and remove the wheel bearing retaining nut, then pull the hub / disc assembly away (**fig. 2**), then proceed to dismantle the disc from the hub



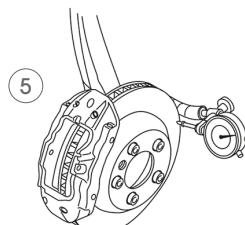
3. Remove all traces of rust, dirt, or burrs from the mounting face of the hub flange (**fig. 3**); failure to do so may invalidate the warranty

4. Clean the protective oil coating off the new brake discs with a suitable solvent or brake cleaner fluid, ensuring the mounting face is free from dirt or burrs (**fig. 4**)



5. Assemble the new brake disc onto the hub flange with the external support design and adjust the wheel bearing in accordance with the manufacturer's specifications

6. Check the 'run out' of the disc using a dial gauge indicator (**fig. 5**), measuring at the disc surface 15mm from the outer edge of the disc, while slowly rotating it. Alternatively, use feeler gauges between a fixed point and the disc. Maximum disc run out should not exceed 0.15mm. If a higher reading is recorded, repeat the above cleaning procedures and, where possible, rotate the disc 180° on the mounting flange



7. Reassemble the brake caliper and install new brake pads

8. Depress the brake pedal several times to ensure contact between the pads and the disc

9. Replace the road wheel and tighten the wheel nuts to the correct torque settings

10. Check the brake fluid level

After installing new brake discs, it is strongly recommended to carry out a full balancing of the whole rotating assembly.



Juratek.com