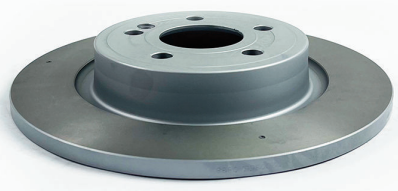


New to Range Brake Discs October 2024



Please note, part numbers with images are recommended for customers stock. Part numbers without images are available from Juratek stock but for less popular applications.

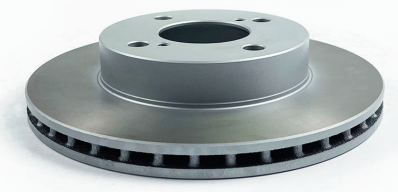
MER381							POS R	MER392							POS R																
Dia	Min Th	Max Th	Cent Dia	Height	PCD	Application							Dia	Min Th	Max Th	Cent Dia	Height	PCD	Application												
295	10.3	12	67	43	112	MERCEDES-BENZ: A-Class 18- B-Class 18- CLA 19-							330	19.4	22	67	54	112	MERCEDES-BENZ: CLE 15-19 M-Class 11-15												
Holes							5 x Ø15.3mm & 1 x Ø9.2mm counterbore Ø15mm							Holes							5 x Ø15.2mm & 1 x Ø9.1mm counterbore Ø15mm										
APEC				BLUEPRINT				BORG & BECK				COMLINE				APEC				BLUEPRINT				BORG & BECK				COMLINE			
DSK3435				ADU1743117				BBD5618				ADC5098				DSK3195				ADU174365				BBD5479 BBD5558				ADC2886V			
DELPHI				MINTEX				QH				TRW				DELPHI				MINTEX				QH				TRW			
BG5095C				MDC2977C				-				-				BG4933C				MDC2672				-				-			
OEM							2474230212, 247423021207, A2474230212							OEM							1664230112, 1664230600, A1664230600										



MIT169							POS F	NIS179							POS F																
Dia	Min Th	Max Th	Cent Dia	Height	PCD	Application							Dia	Min Th	Max Th	Cent Dia	Height	PCD	Application												
251	15.4	17	64	42	100	MITSUBISHI: Mirage 12-							283	26	28	68	44	114	NISSAN: Leaf 10- NV200 14-												
Holes							4 x Ø12.6mm & 2 x M8							Holes							5 x Ø12.8mm										
APEC				BLUEPRINT				BORG & BECK				COMLINE				APEC				BLUEPRINT				BORG & BECK				COMLINE			
DSK3282				ADC443132				BBD5359				ADC2811V AND6988				DSK3052				ADN143167				BBD5384				ADC0296V AND6973			
DELPHI				MINTEX				QH				TRW				DELPHI				MINTEX				QH				TRW			
BG4830C				MDC2711				-				DF6908				BG4678C				MDC2732				-				-			
OEM							4615A129							OEM							402063NA0A, 402063NL0A, 402063NL0B, 40206CY00A										



SUZ125							POS F								
Dia	Min Th	Max Th	Cent Dia	Height	PCD	Application									
231	18	20	60	49	100	SUZUKI Celerio 14-									
Holes							4 x Ø12.7mm & 2 x M8x1.25								
APEC				BLUEPRINT				BORG & BECK				COMLINE			
DSK3289				ADK84348				BBD5449				ADC2851V			
DELPHI				MINTEX				QH				TRW			
BG4810C				MDC2942C				-				-			
OEM							5531184M00, 5531184M00000								



www.juratek.com

